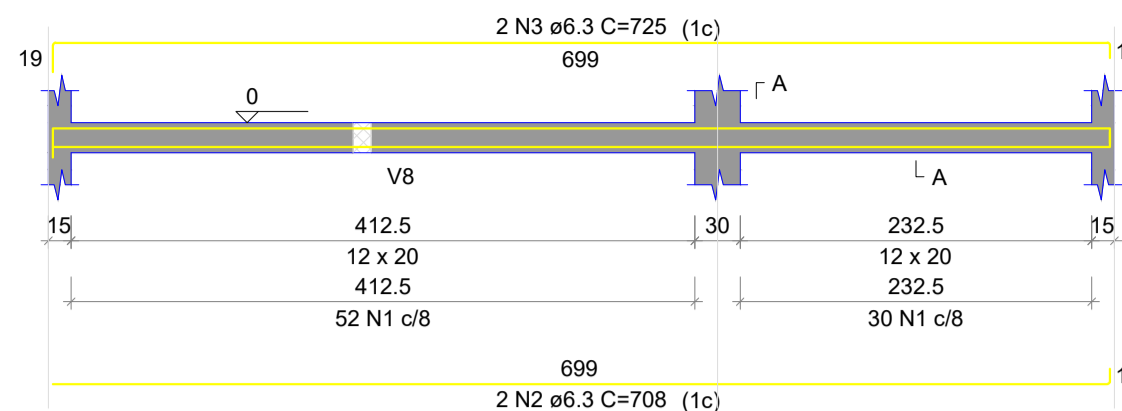


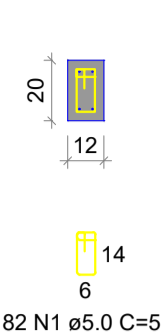
V1

ESC 1:50



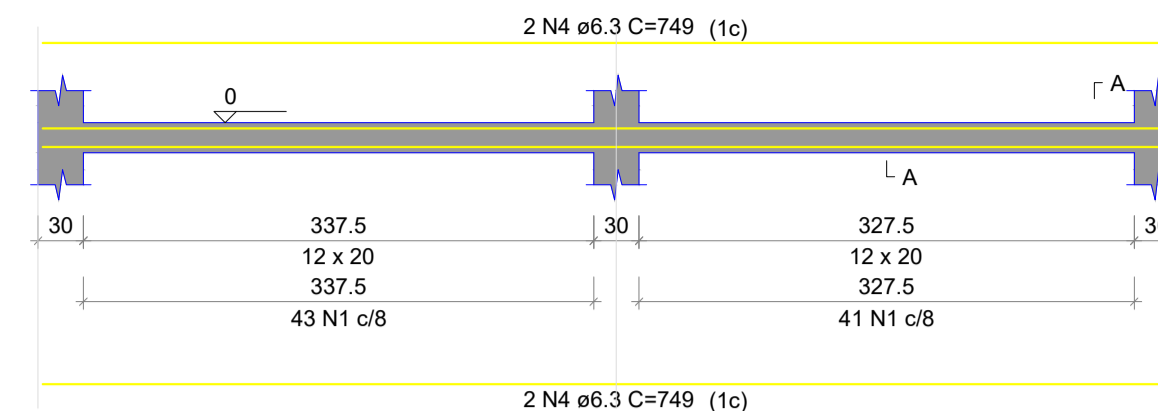
SEÇÃO A-A

ESC 1:25



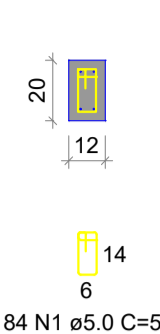
V2

ESC 1:50



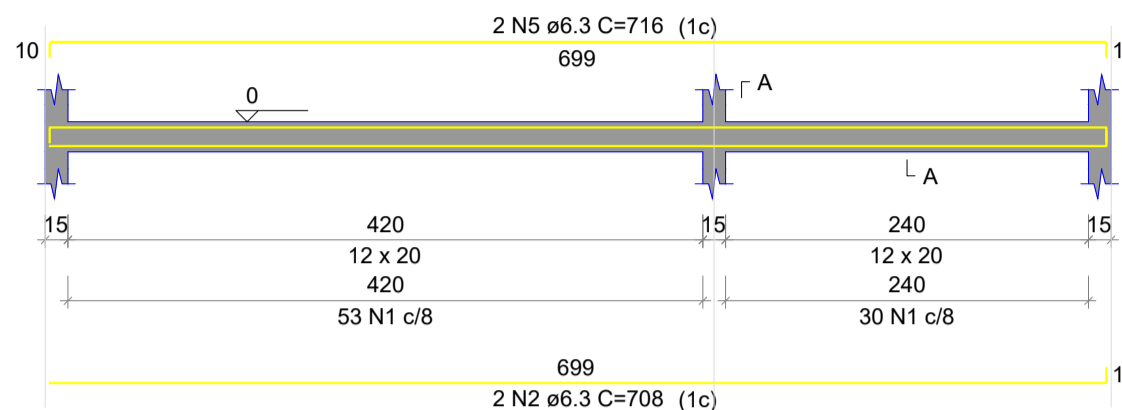
SEÇÃO A-A

ESC 1:25



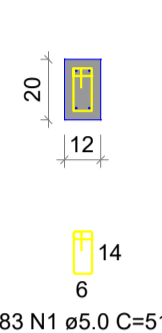
V3

ESC 1:50



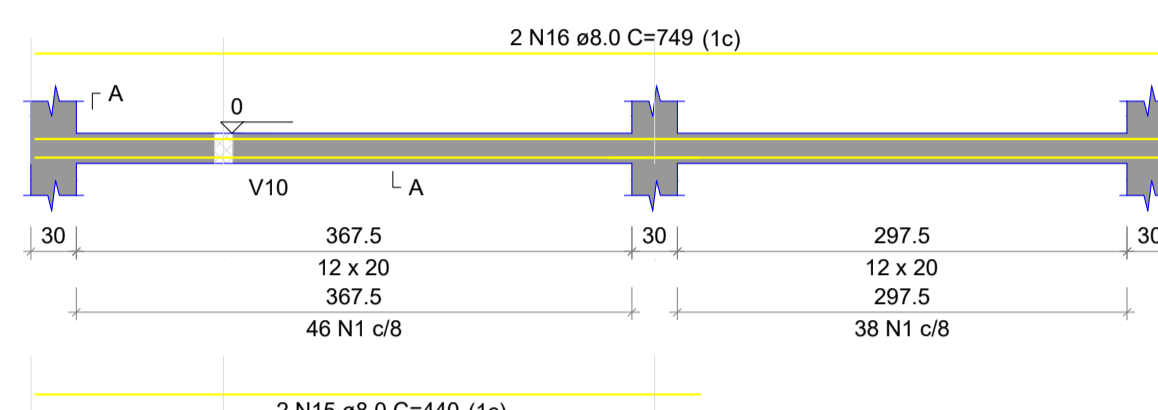
SEÇÃO A-A

ESC 1:25



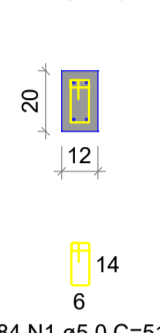
V4

ESC 1:50



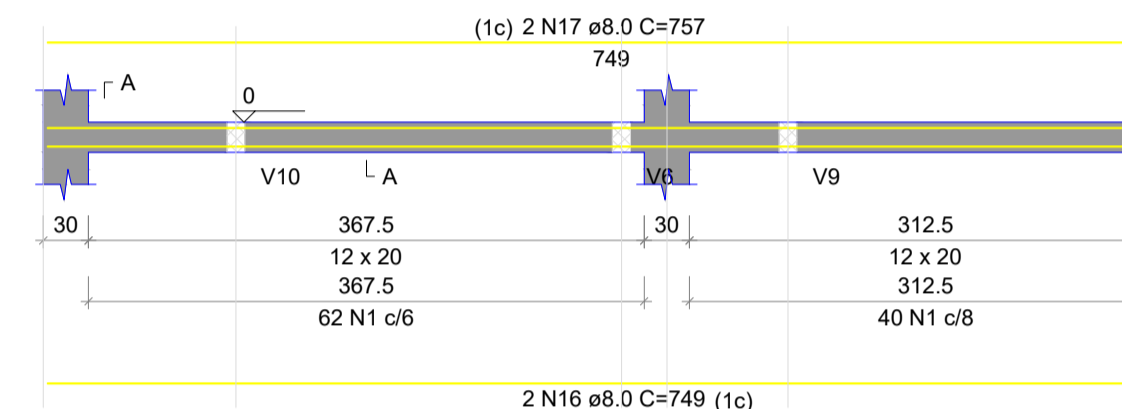
SEÇÃO A-A

ESC 1:25



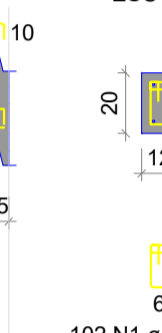
V5

ESC 1:50



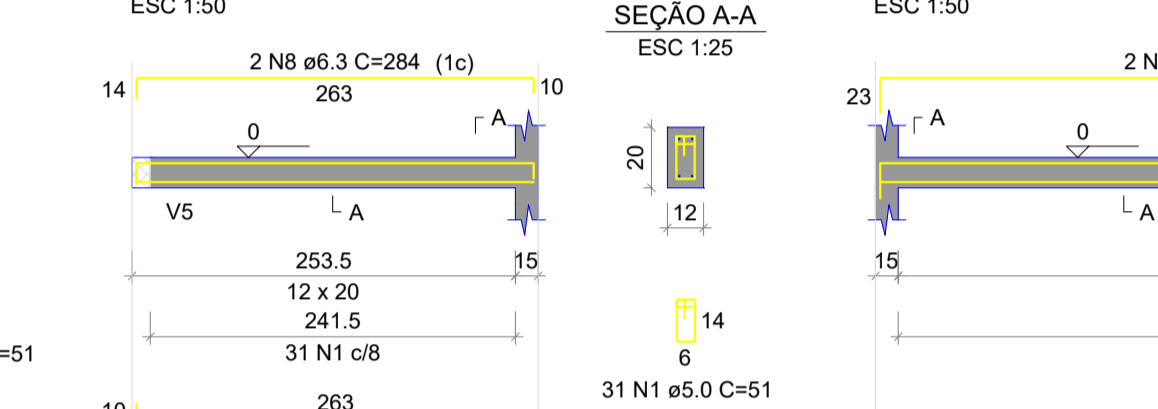
SEÇÃO A-A

ESC 1:25



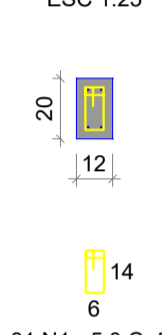
V6

ESC 1:50



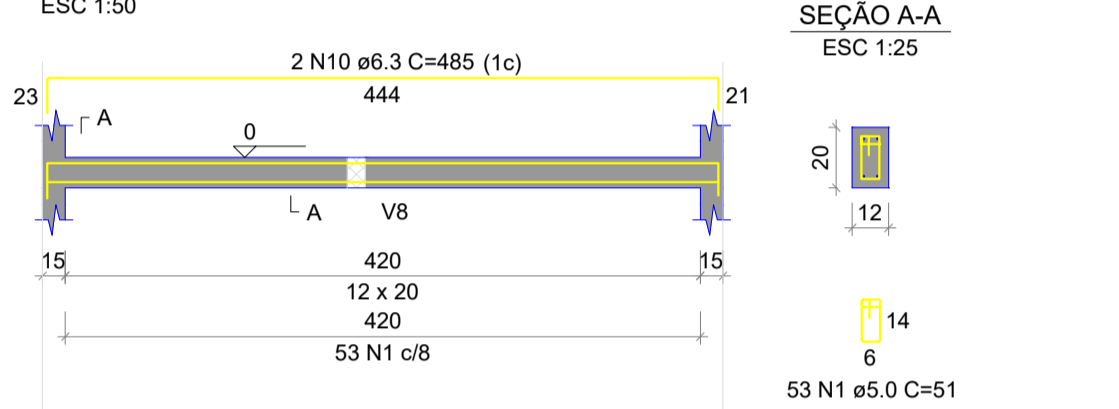
SEÇÃO A-A

ESC 1:25



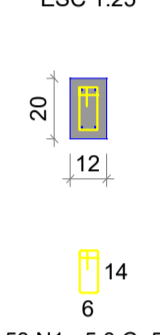
V7

ESC 1:50



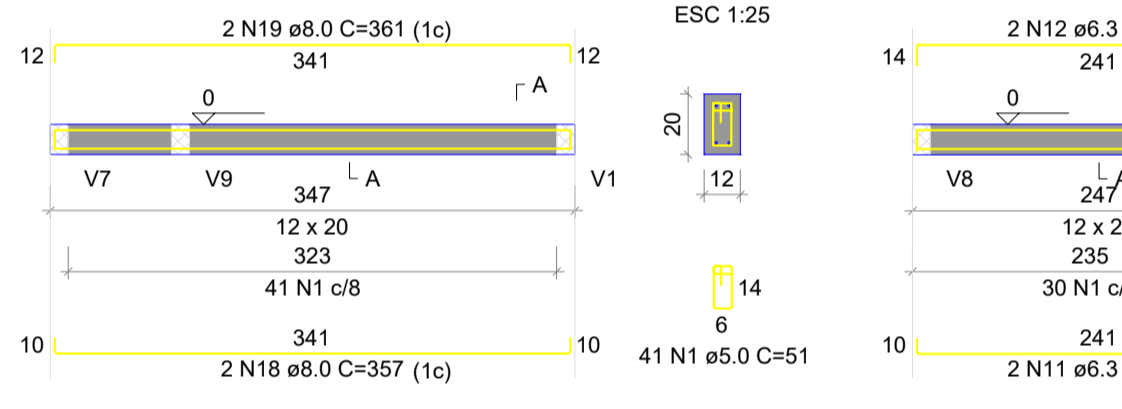
SEÇÃO A-A

ESC 1:25



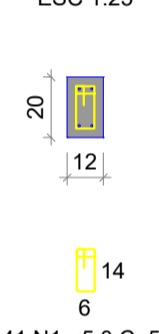
V8

ESC 1:50



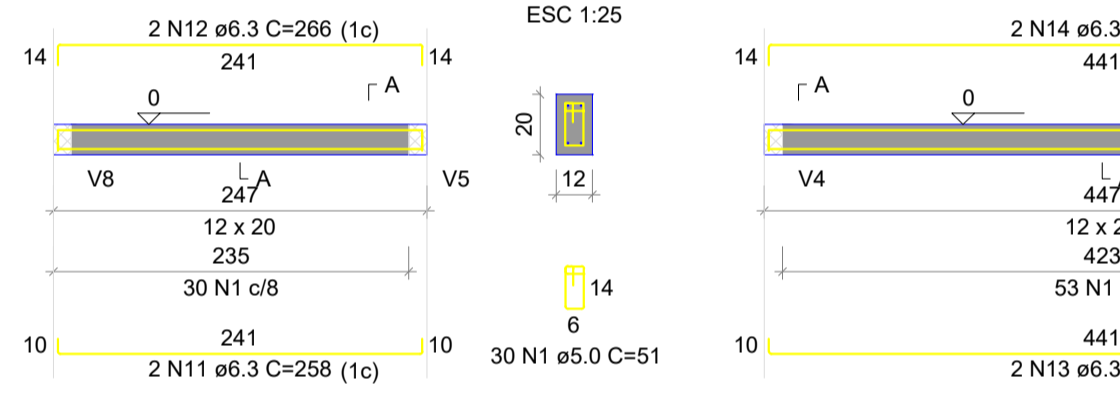
SEÇÃO A-A

ESC 1:25



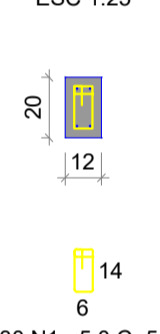
V9

ESC 1:50



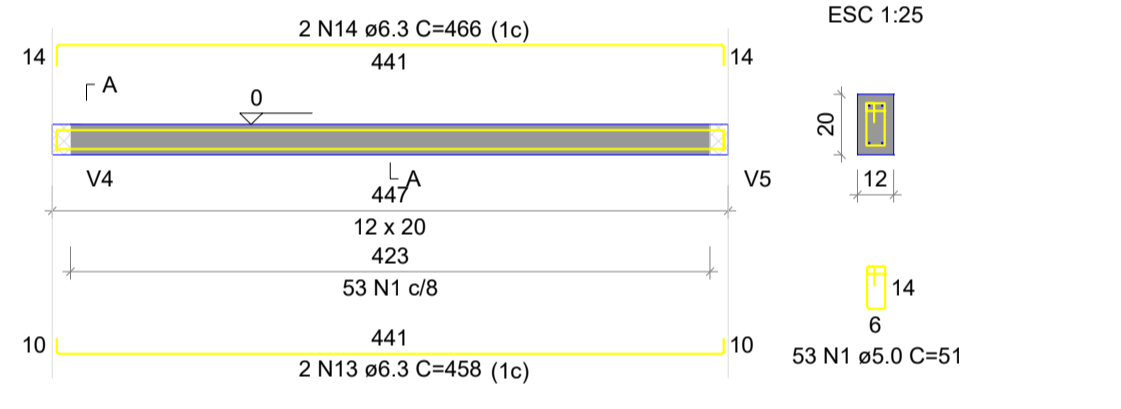
SEÇÃO A-A

ESC 1:25



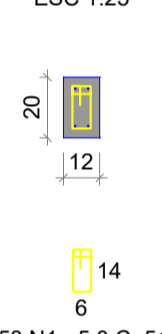
V10

ESC 1:50



SEÇÃO A-A

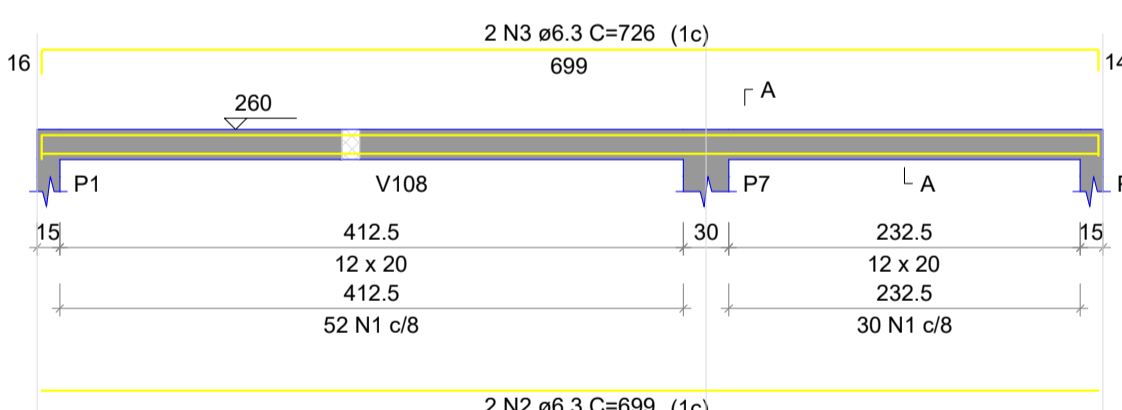
ESC 1:25



VIGAS TÉRREO

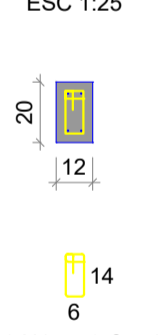
V101

ESC 1:50



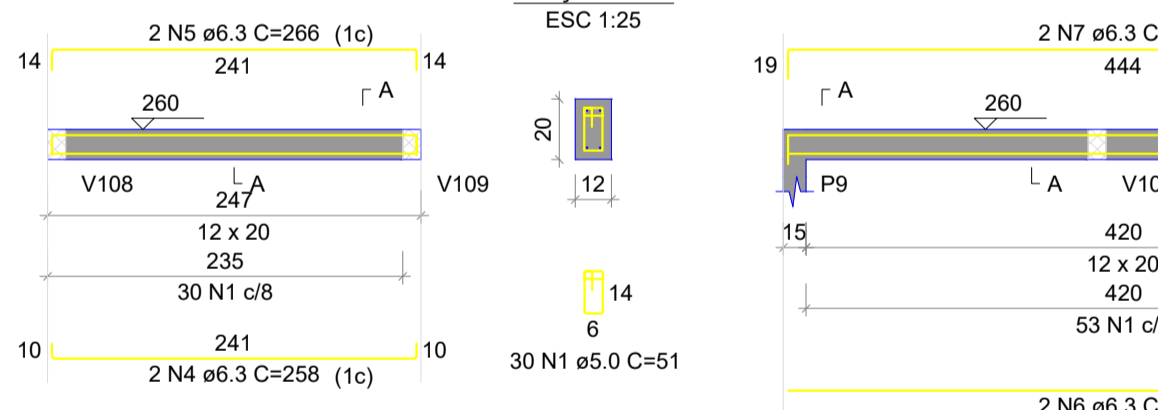
SEÇÃO A-A

ESC 1:25



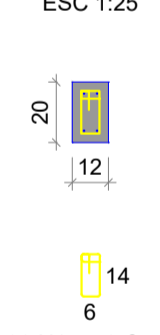
V102

ESC 1:50



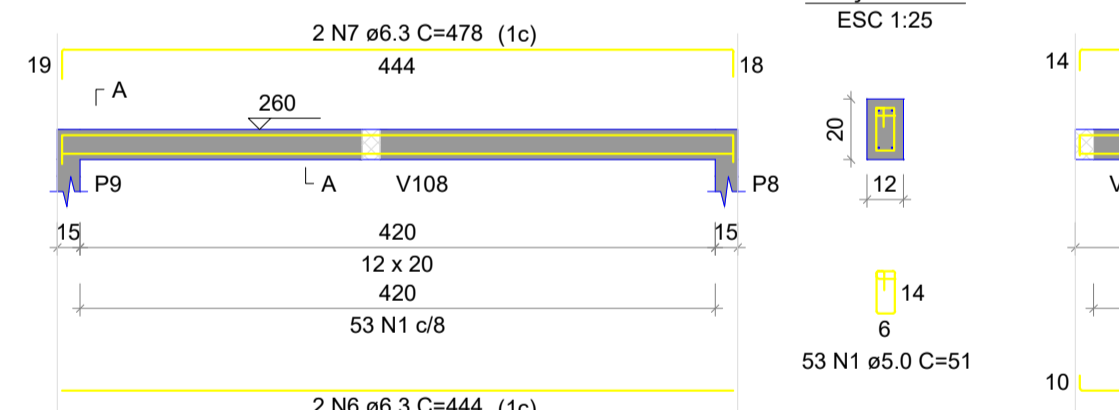
SEÇÃO A-A

ESC 1:25



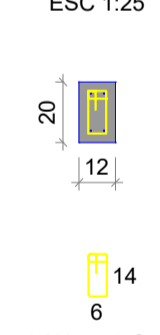
V103

ESC 1:50



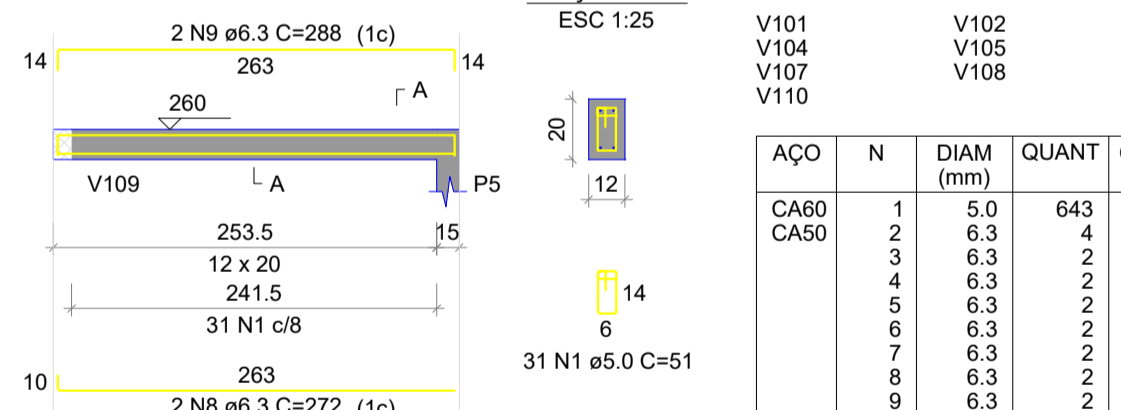
SEÇÃO A-A

ESC 1:25



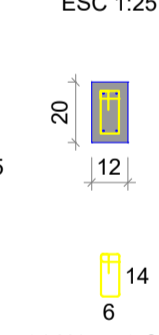
V104

ESC 1:50



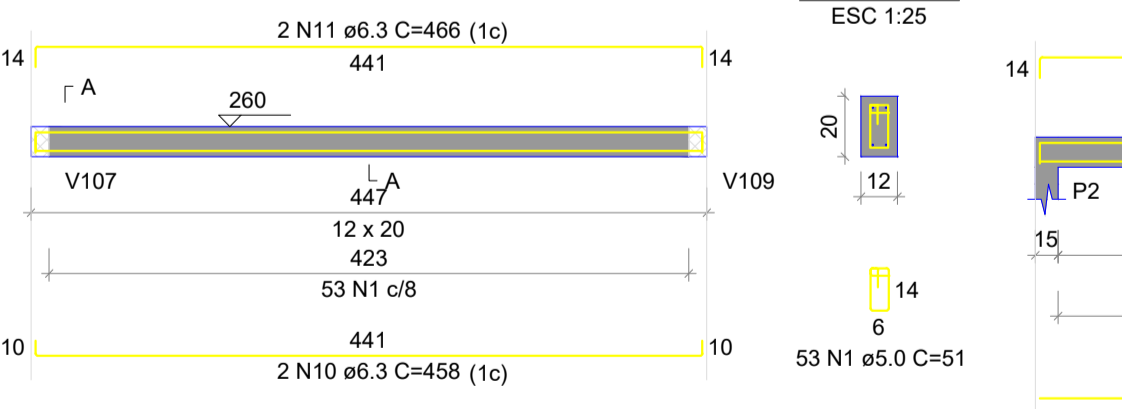
SEÇÃO A-A

ESC 1:25



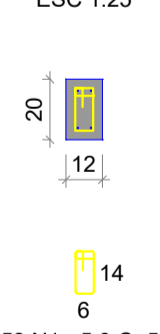
V105

ESC 1:50



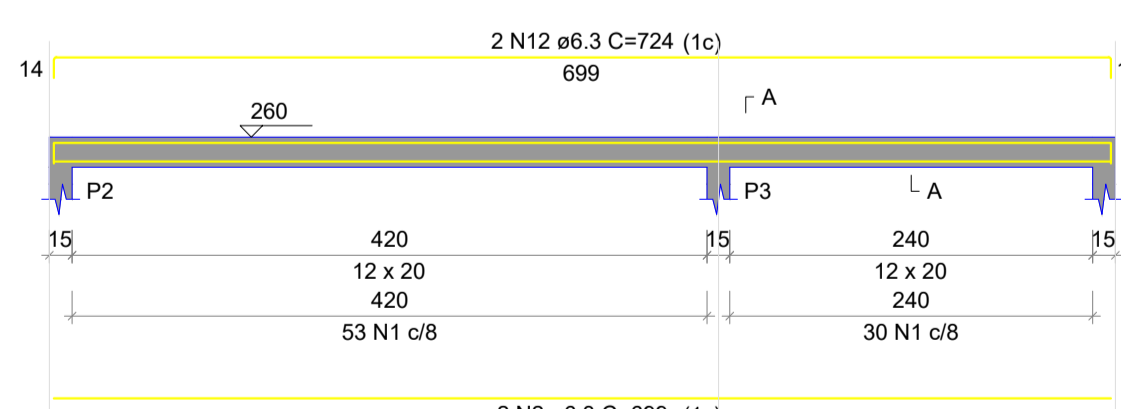
SEÇÃO A-A

ESC 1:25



V106

ESC 1:50



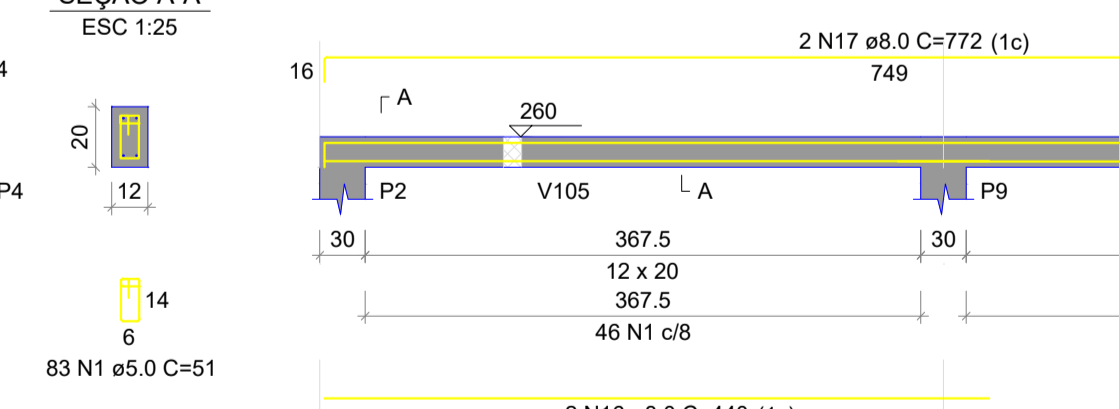
SEÇÃO A-A

ESC 1:25



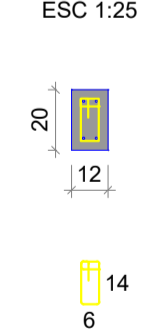
V107

ESC 1:50



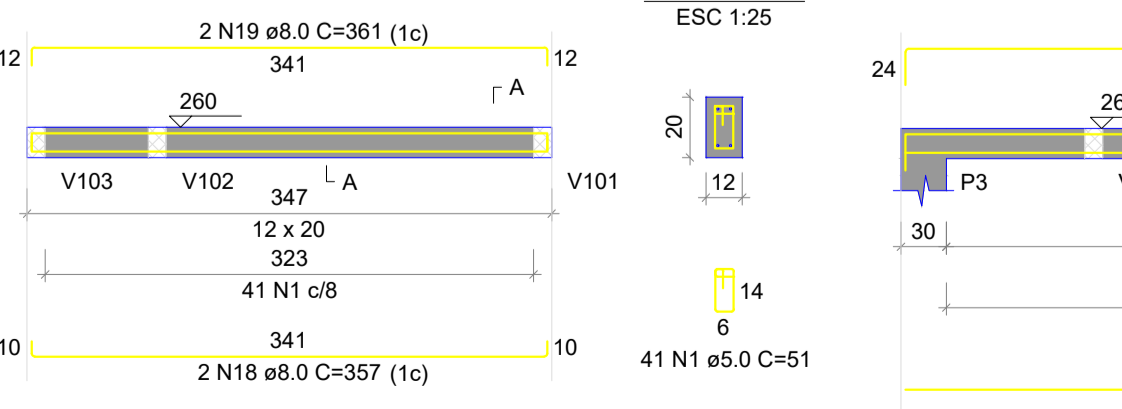
SEÇÃO A-A

ESC 1:25



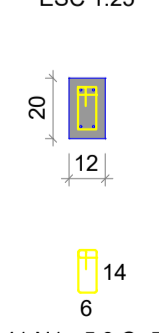
V108

ESC 1:50



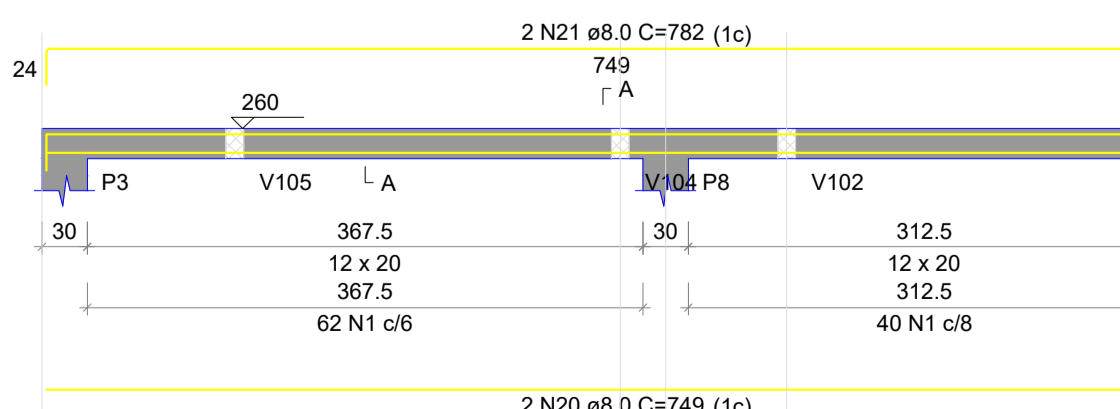
SEÇÃO A-A

ESC 1:25



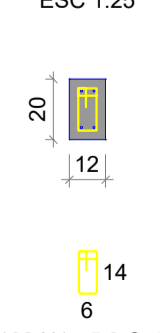
V109

ESC 1:50



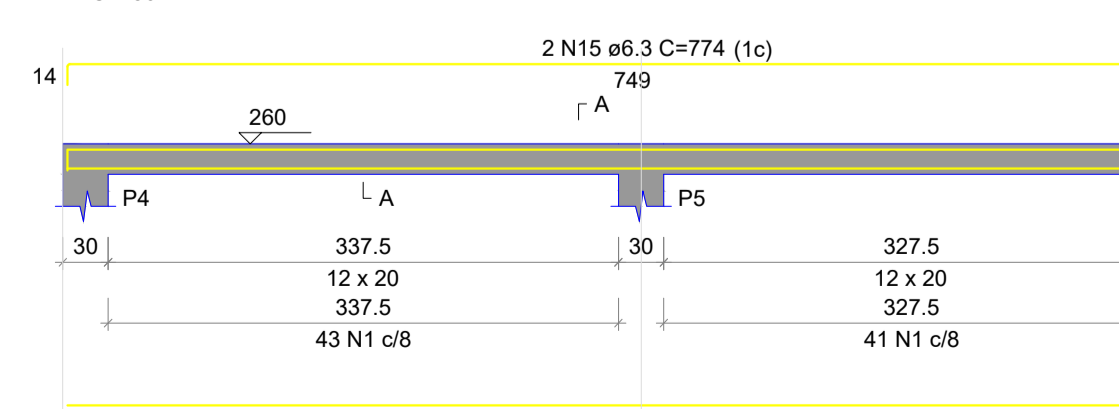
SEÇÃO A-A

ESC 1:25



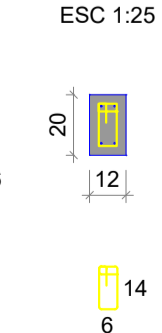
V110

ESC 1:50



SEÇÃO A-A

ESC 1:25



VIGAS COBERTURA

RELAÇÃO DO AÇO

AÇO	N	DIAM (mm)	QUANT	C.UNIT (cm)	C.TOTAL (cm)
CA60	1	5.0	643	51	32793
CA50	2	6.3	4	708	2832
	3	6.3	2	725	1450
	4	6.3	4	749	2996
	5	6.3	2	716	1432
	6	6.3	2	370	740
	7	6.3	2	272	544
	8	6.3	2	264	528
	9	6.3	2	444	888
	10	6.3	2	485	970
	11	6.3	2	258	516
	12	6.3	2	266	532
	13	6.3	2	458	916
	14	6.3	2	406	812
	15	8.0	2	440	880
	16	8.0	4	749	2996
	17	8.0	2	757	1514
	18	8.0	2	357	714
	19	8.0	2	361	722

RESUMO DO AÇO

AÇO	DIAM (mm)	C.TOTAL (m)	QUANT + 10% (Barras)	PESO + 10% (kg)
CA50	6.3	153.2	15	41.2
CA60	8.0	68.3	7	29.6
	5.0	327.9	-	55.6

PESO TOTAL (kg)	70.9
CA50	55.6
CA60	15.3

Volume de concreto (C-25) = 1.20 m³
Área de forma = 25.94 m²

